

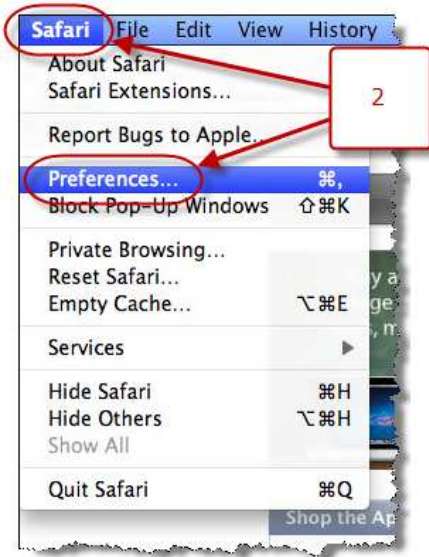
Solution for login problems with Safari browser.

January 30 2014

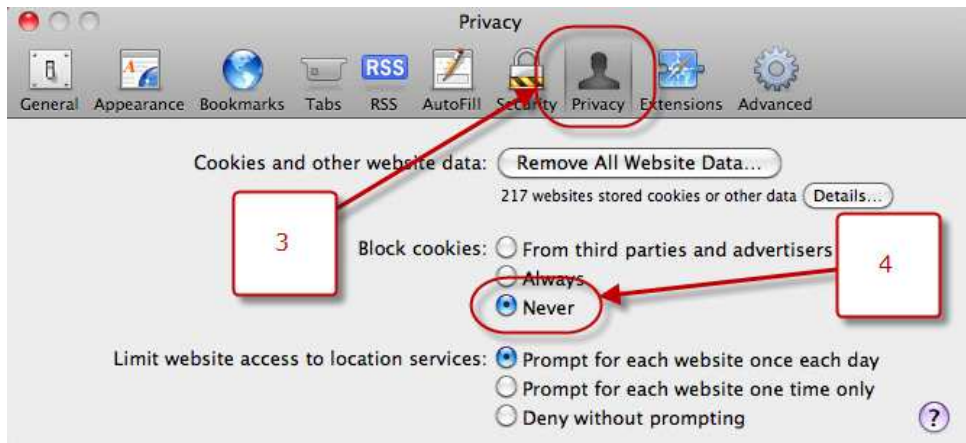
Important news for people using the Safari browser to login to our website.

The solution for the login problems has been found:

1. Open Safari
2. Click Safari>Preferences



3. In the window that opens, click Privacy
4. Look for block cookies and select "never"



Close the pop-up window and try to login to Export Documents in Control. From now on this should work properly again.